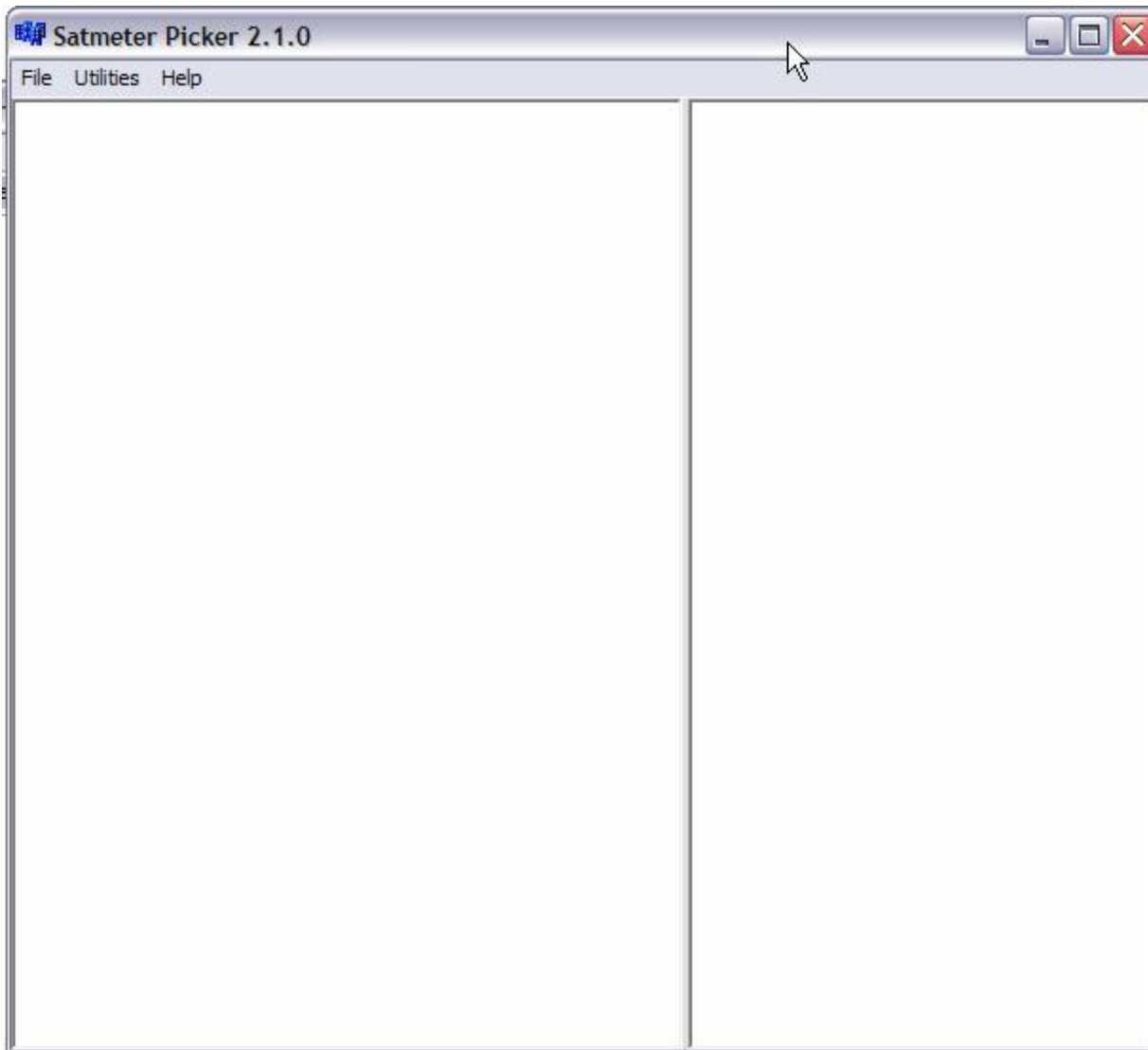


SatPicker – Custom datasets for your SatMeter

Open the SatPicker application as normal. The interface looks like this:



The principle is that you load one or more datasets into the left hand pane, and you drag and drop them onto the right hand pane to create your custom dataset. Load all the datasets necessary into the left hand pane using **File, Open Master List**.

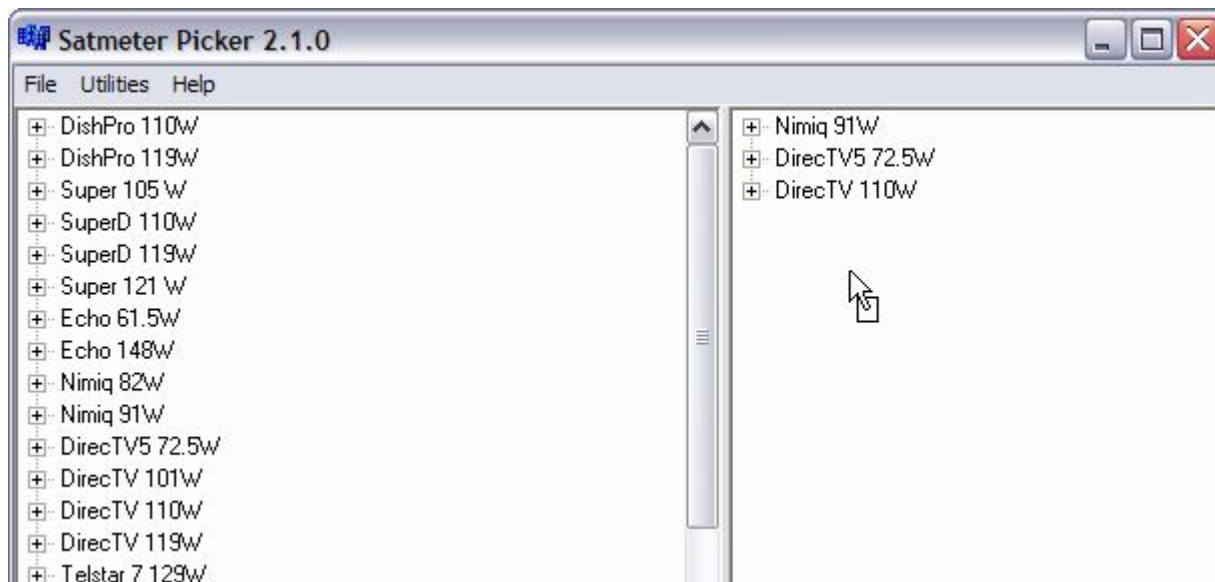


Just keep locating the datasets with the Windows File Dialog until you are satisfied.

Datasets created with SatPicker previously can be opened with **File, Open**. You can then delete from that data.

SatPicker – Custom datasets for your SatMeter

When you drag and drop, the selected satellites appear in your custom list:



To download the new dataset into the meter, use **Utilities, Download** to start the transfer. Currently, the status bar does not function to indicate the progress of the transfer, but it's happening okay.

Several points to remember:

- You have to set the correct port in the **Utilities** menu before any transfer can take place.
- Datasets created in SatPicker cannot be transferred with the conventional SatLoader application
- This application allows you to print out the vital parameters of the custom dataset from the File menu
- You save the new dataset from the File menu.